

ENHANCING REVISION WIDNAU - NEFENFELD

GST Ostschweizer Fachhochschule, Campus Rapperswil
Studiengang Landschaftsarchitektur, HS2/24
Modul Entwurf 3 | Kooperation Lisa Lindtner, Postfossil Neighbourhoods
Dozierende OST: Prof. Andrea Ceka | Peter Vogt
Assistentin OST: Lisa Schmitz
Dozierende UNIL: Prof. Michael Wagner | Luis Hill
Studierende: Regina Matt (Landschaftsarchitektur) | Lisa-Marie Lambauer (Architektur)

MASTERPLAN | 1:500



ENHANCING REVISION WIDNAU - NEFENFELD

GST Ostschweizer Fachhochschule, Campus Rapperswil
 Studiengang Landschaftsarchitektur, HS23/24
 Modul Entwurf 5 | Kooperation Uni Leoben/Leoben, Postfossil Neighbourhoods
 Dozent: Prof. Andrea Caglia | Peter Vogt
 Assistent: GST-Lina Schmitz
 Dozierende UNILIE: Prof. Michael Wagner | Luis HB
 Studierende: Regina Matt (Landschaftsarchitektur) | Lisa Marie Lambauer (Architektur)

DIAGRAM - EXISTING & NEW | 1:1000

-  REMOVED TREES & HEDGES
-  REVALUED AREAS
-  DEMOLISHED AREAS
-  LEVEL INCREASE
-  NEW VOLUMES



SPOTLIGHTS | WITHOUT SCALE

steps embedded in terrain

soft limits through groups of trees

light-permeable tree tops

traffic calming measures

permeable surfaces on all parking spaces

train tracks overgrown with native wildflowers

community living and gardening

green roofs with solar energy

autumn colours on street lamp posts

gravel turf permeable & walkable

tree trenches for rainwater management

footpaths guided by trees with soft flowing canopies

Koelreuteria paniculata in autumn

TREE CONCEPT

In order to give the open space elements a pronounced typology, they are categorised by the trees and shrubs. They are marked with the corresponding colour in the plans for easy understanding and easy identification. Of course, the trees and shrubs marked in green will also be adorned with beautiful colours in autumn.

AVENUE

GROWTH: straight and columnar
 CANOPIES: dense and lush
 AUTUMN COLOUR: shades of red



SELECTION OF SPECIES:

- *Acer rubrum* 'Scanlon'
- *Fagus sylvatica* 'Dawyck'
- *Liquidambar styraciflua*
- *Pyrus calleryana* 'Chanticleer'

ROWS

GROWTH: upright and slender
 CANOPIES: soft and sparse
 AUTUMN COLOUR: warm yellow



SELECTION OF SPECIES:

- *Ostrya carpinifolia*
- *Gleditsia triacanthos* 'Skyline'
- *Betula pendula*
- *Koelreuteria paniculata* 'Fastigiata'

GROUPS - DENSE AND DISSOLVED

GROWTH: variable bodies and different sizes
 CANOPIES: ranging from dense to light
 AUTUMN COLOUR: different shades of yellow, orange and red



SELECTION OF SPECIES:

- *Sophora japonica*
- *Acer saccharinum*
- *Amelanchier x lamarckii*
- *Euonymus alatus*

ENHANCING REVISION WIDNAU - NEFENFELD

DIAGRAM - MOBILITY | 1:2000



DIAGRAM - TREE CONCEPT | 1:2000



VISUALISATION



PRELIMINARY DESIGN - DESCRIPTION

The communal square is intended as a courtyard to a building with various ground floor uses. The building will house a bakery with a café and outdoor area, as well as open spaces for communal use or pop-up shops. The square is framed by two large groups of trees and shrubs, which provide access to the centre of the square through a light underplanting. The square is permeable due to its gravel surface, but the wooded areas are slightly lowered so that the rainwater can drain away directly on site. The large open area in the centre of the square is intended for multi-purpose use so that smaller neighbourhood events can also take place or a game of boules can be played. From the street side, the square is also visually framed by trees.



SECTION VIEW A-A' FROM SUMMER TO AUTUMN | 1:100

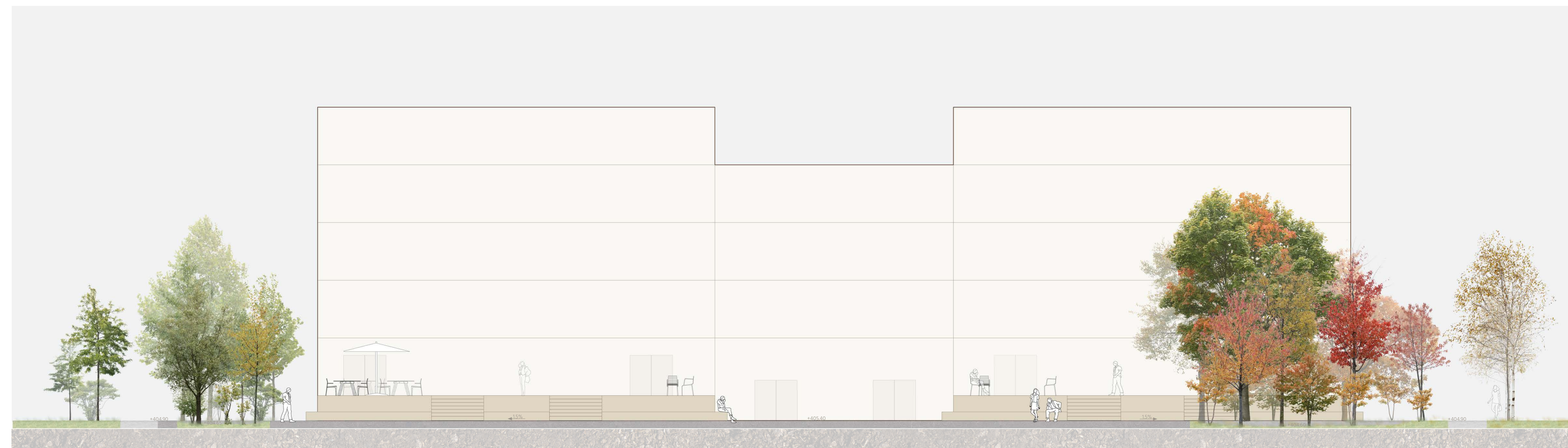


DIAGRAM - ZONES | 1:2000

